



Waste Wise

Geelong Network Survey



Dates Surveyed: 12th – 19th August 2005

Summary

This research study involved 155 face to face interviews with a variety of businesses in the Central Geelong area. The City of Greater Geelong implemented this survey.

Surveys were conducted from Friday 12th August – Friday 19th August 2005.

Executive Summary

Business Overview

- The three main types of businesses that made up the survey sample were Retail (33%), Professional Services (30%) and Food (13%)
- Businesses surveyed were mostly small in size with 1 to 10 employees (81%)

Waste Collection

- 82% of businesses have a waste collection system in place
- City of Greater Geelong is the most popular waste collector used with all types of businesses
- Of the businesses that have a waste collection system 240 litre bin is the most commonly used size (70%)
- 1 – 3 bins is the most common amount of bins used weekly (84%)
- Sharing of bins with neighbouring businesses is not a popular option (87% don't)

Recycling

- 47% of businesses have a paper recycling collection and of that, half use a wheelie bin, 1-3 bins used weekly (83%)

Co-mingled Collection

- 93% don't have co-mingled collection
- 240 litre used (56% - only 5 respondents), 1-3 bins used weekly (78% - 7 respondents)
- Top 3 types of items that go in the co-mingled collection are bottles / cans (33%), cardboard (29%) and newspapers (21%)

Kitchen Organics

- 5% use kitchen organics, and food scraps are the main item that go in this bin

Paper

- 0-50 reams used per annum (84%), 5% use 100% recycled paper and 27% don't know what the percentage of recyclable content is

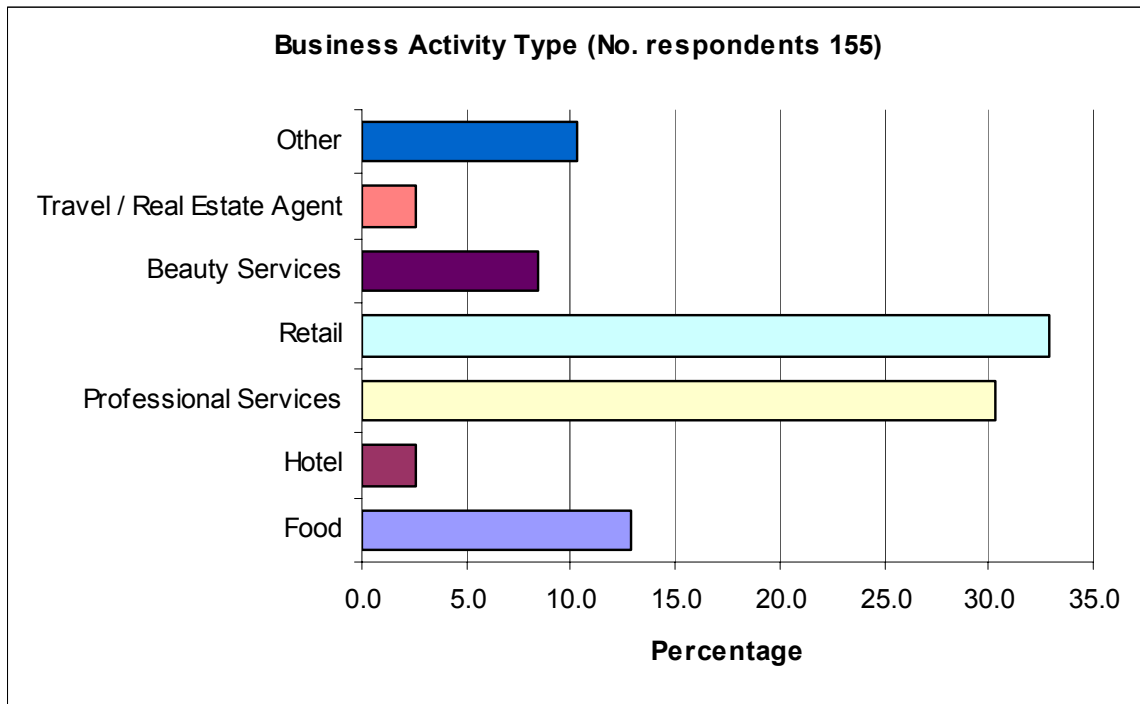
Printing

- 81% use printer machines
- 41% use recycled printer cartridges

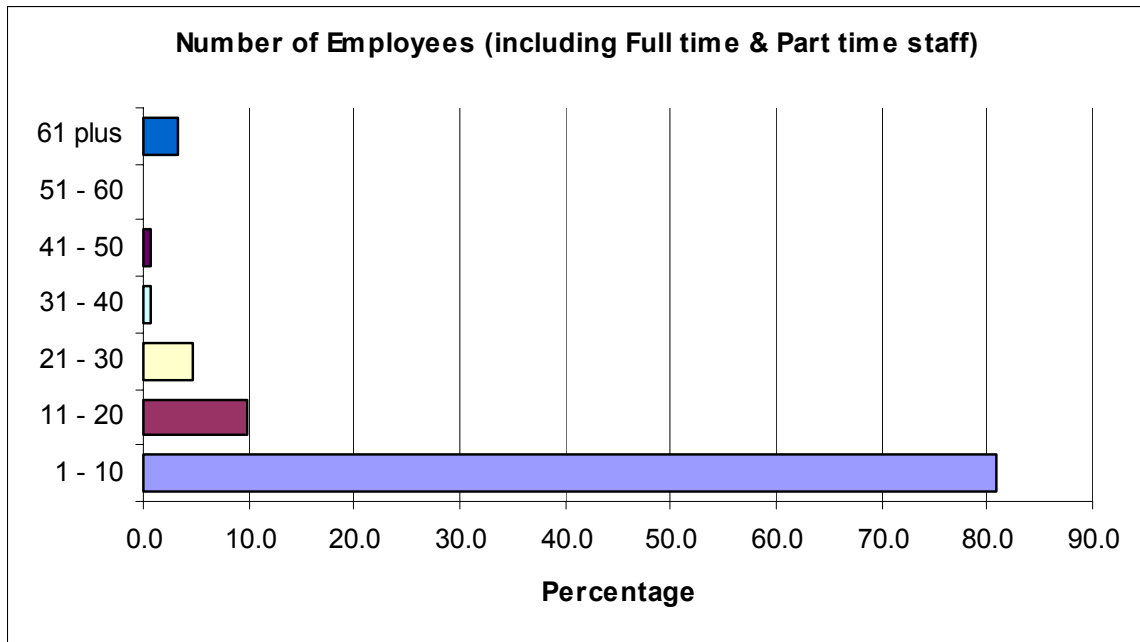
Waste Wise Program

- Only 16% have heard about the program
- 37% of businesses are interested in hearing more about the program

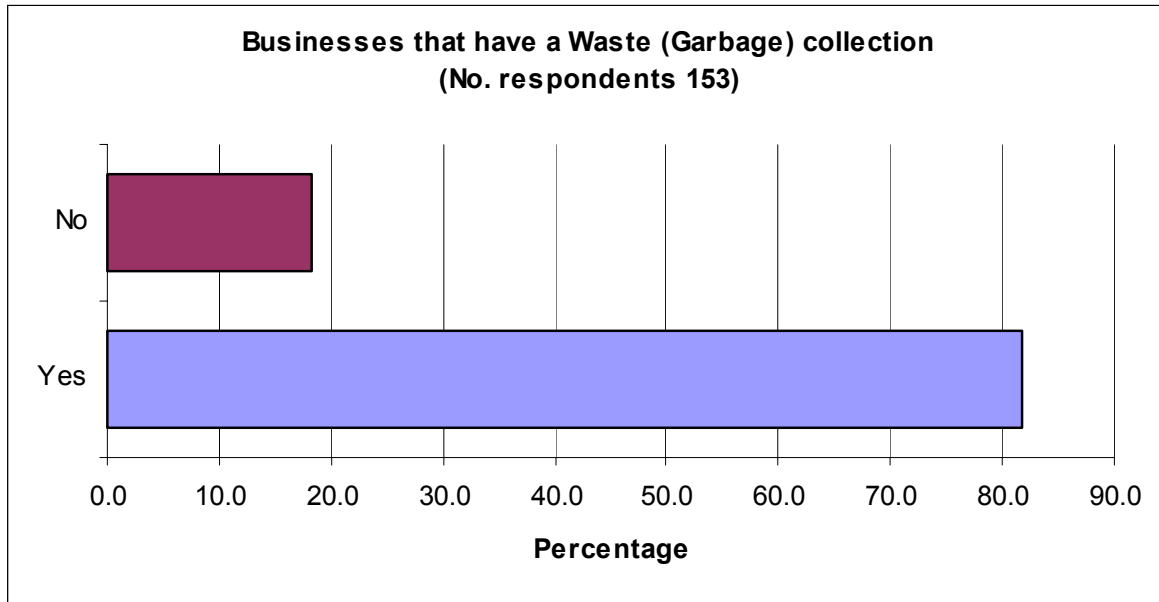
1. What is your business activity?



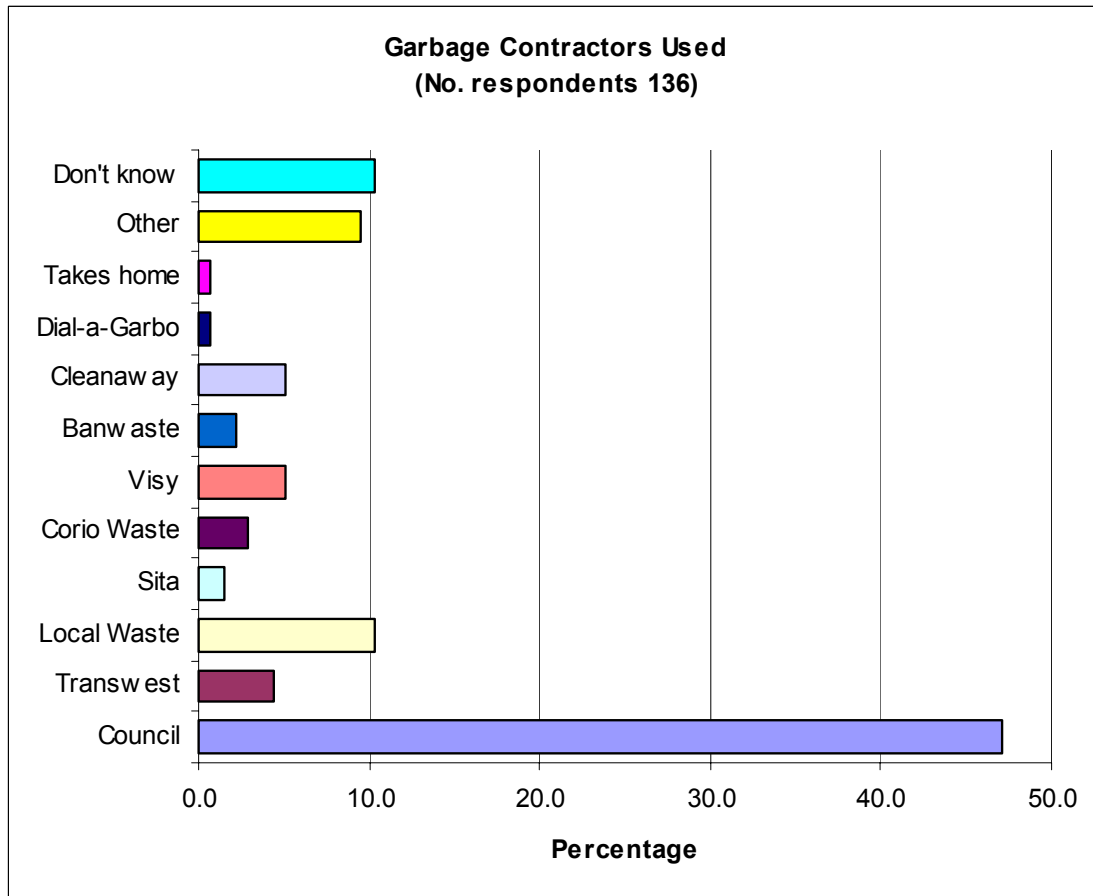
2. Number of employees: (Full time & Part time)



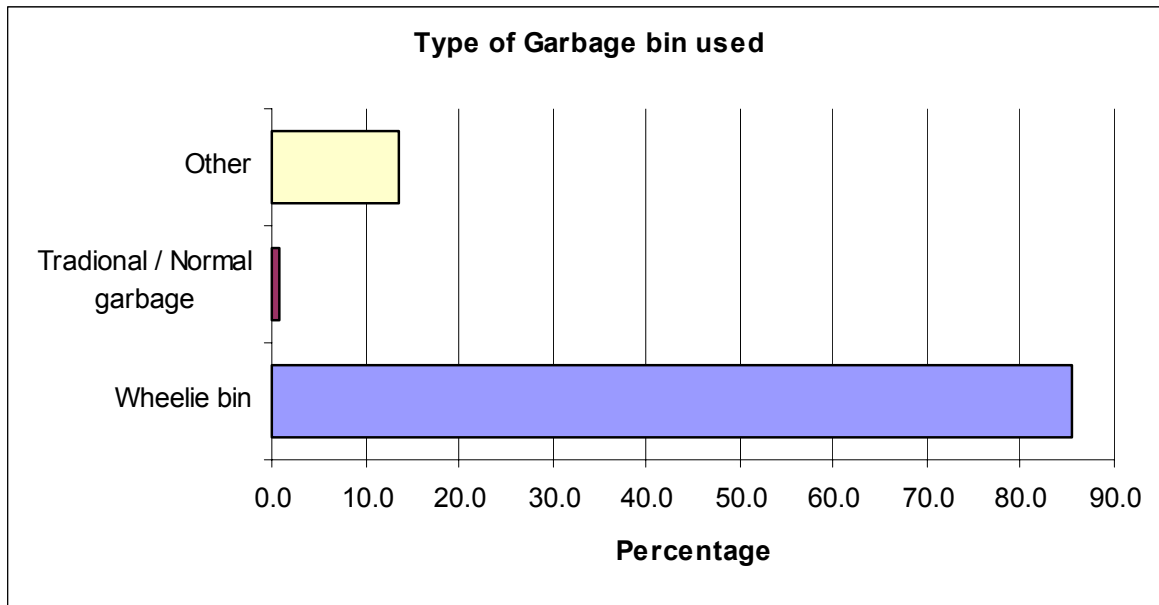
3. Does the business have a waste (garbage) collection?



4. Who is the garbage contractor?

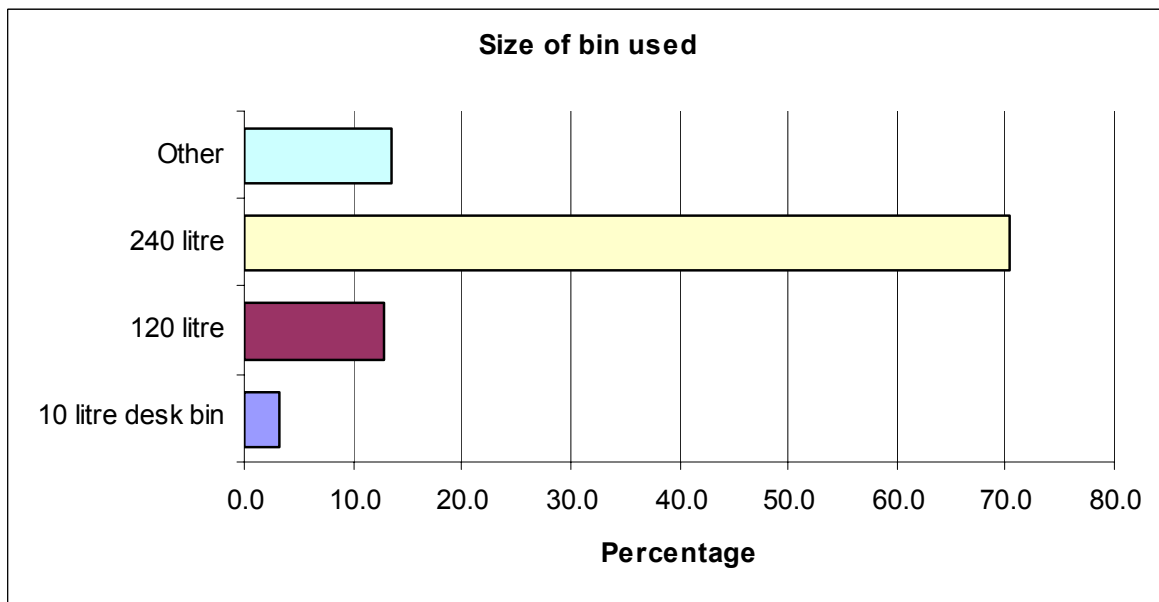


5. What type of bin do you use?



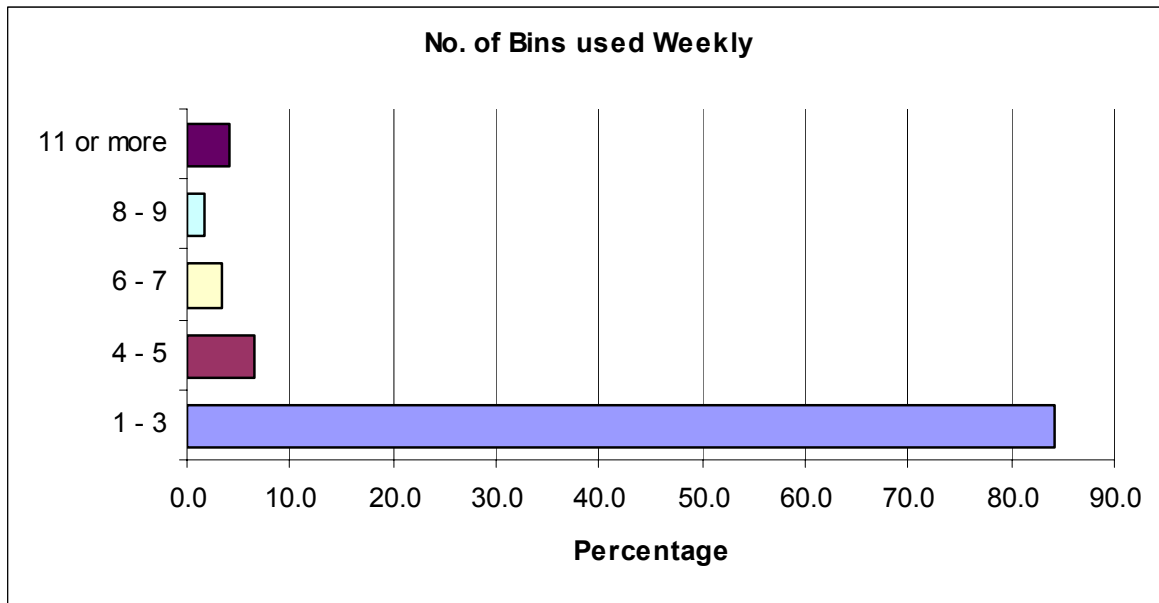
Note: Other includes compactor, skip and bale

6. What size bin do you use?

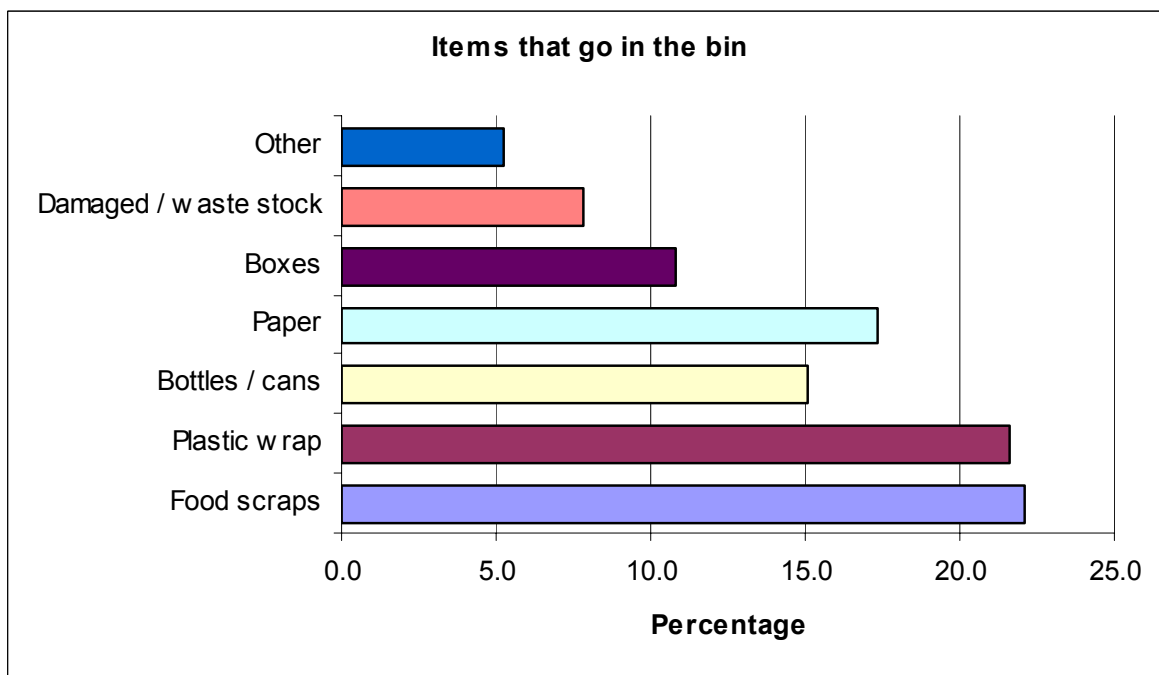


Note: Other includes skip

7. How many bins are used weekly?

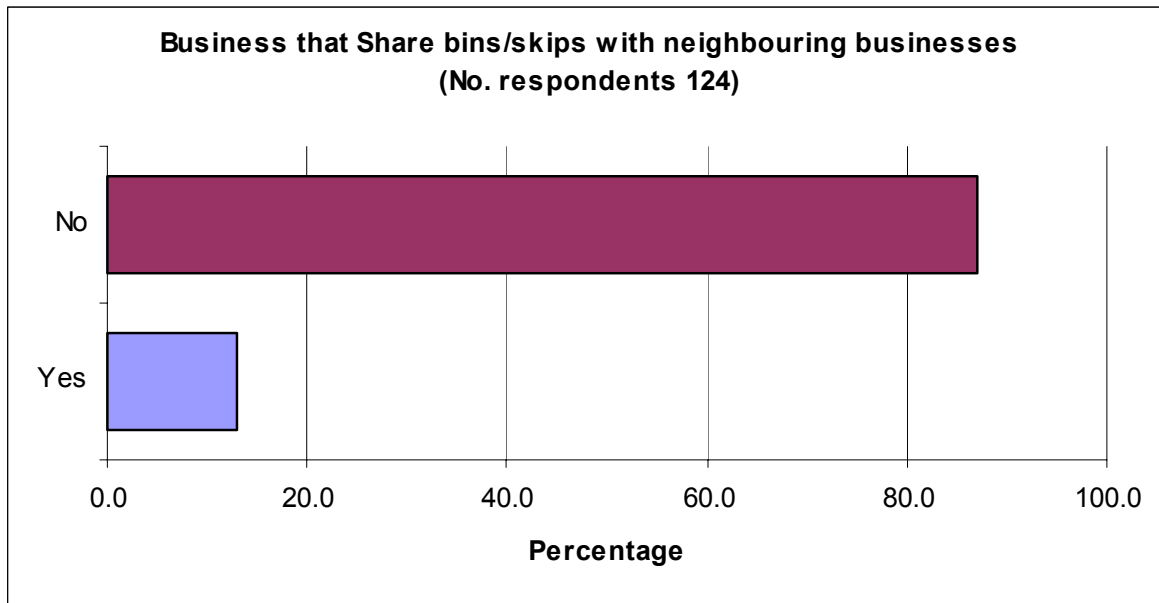


8. What goes in the garbage bin? (Can select more than one)

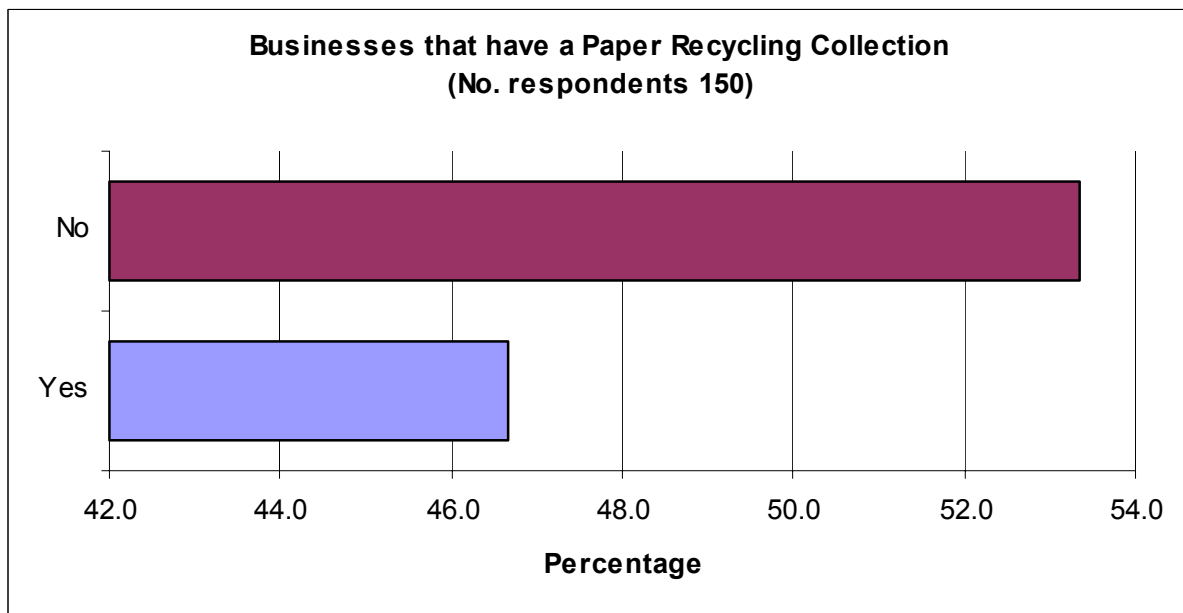


Note: Other includes general rubbish

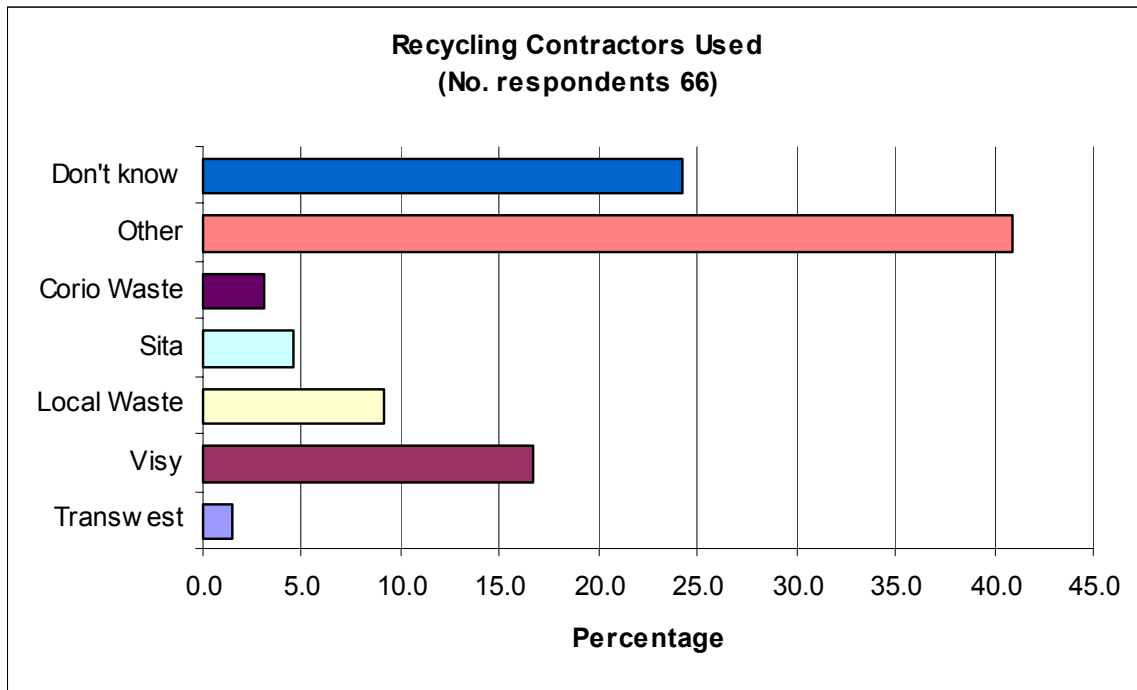
9. Do you share outside bins / skips with neighbouring businesses?



10. Does your business have a paper recycling collection?

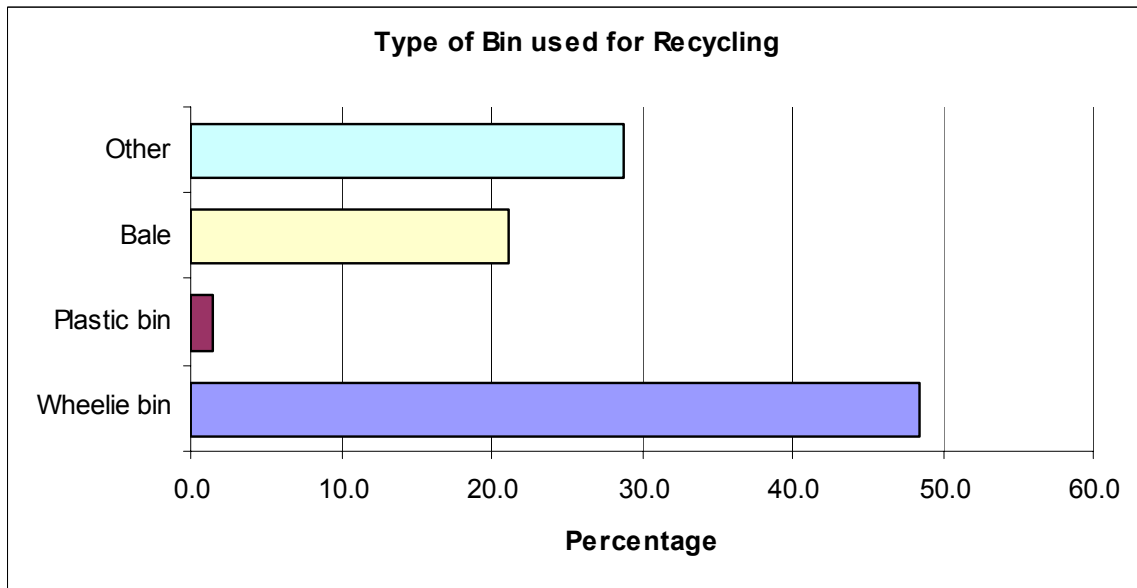


11. Who is your recycling contractor?



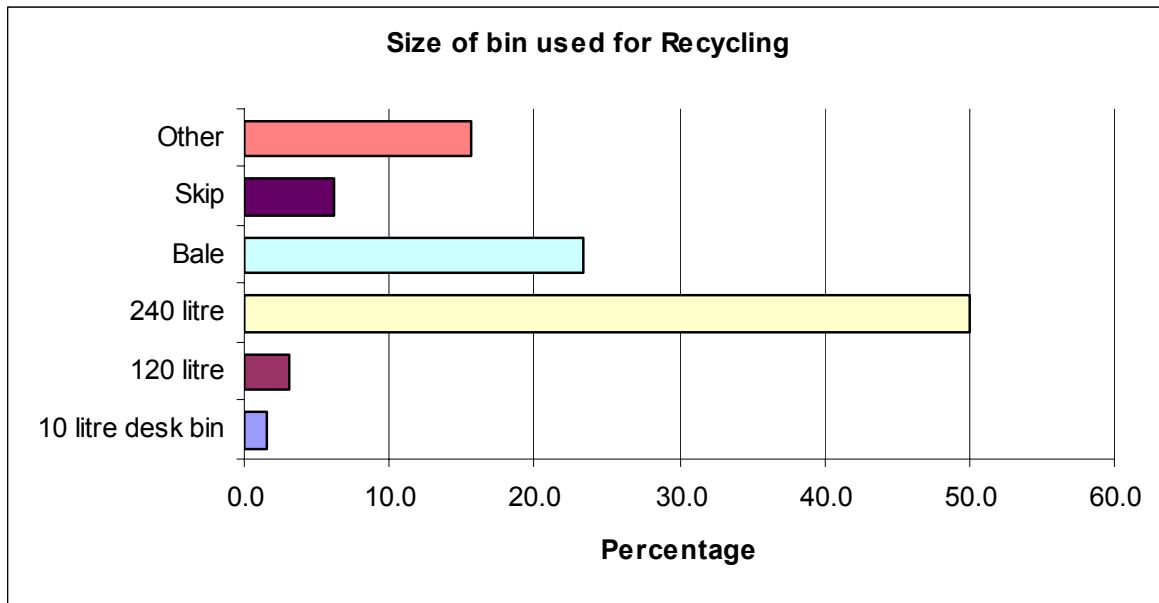
Note: Other includes Cleanaway, Council, Geelong Paper Recyclers and Banwaste

12. What type of bin do you use for recycling?

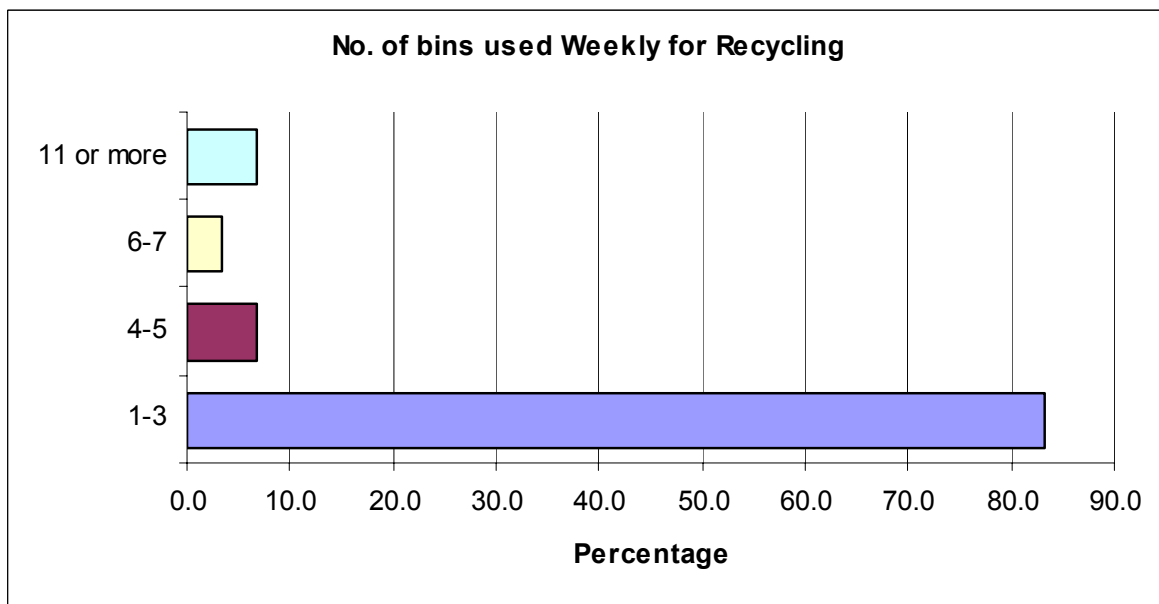


Note: Other includes a bag, box or desk bin

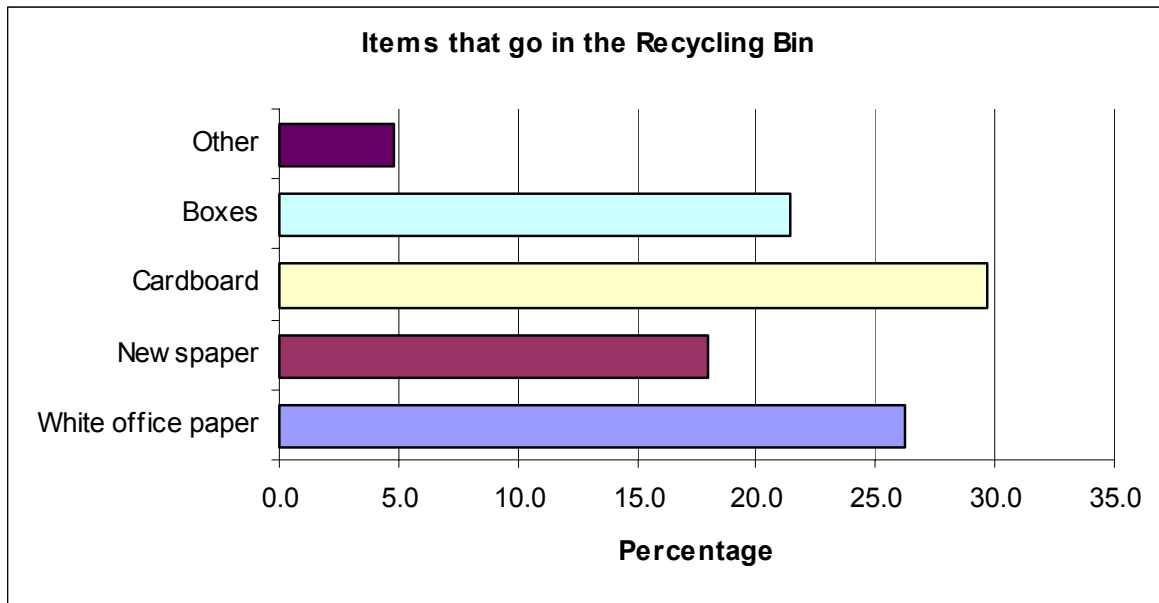
13. What size bin do you use for recycling?



14. How many bins are used weekly for recycling?

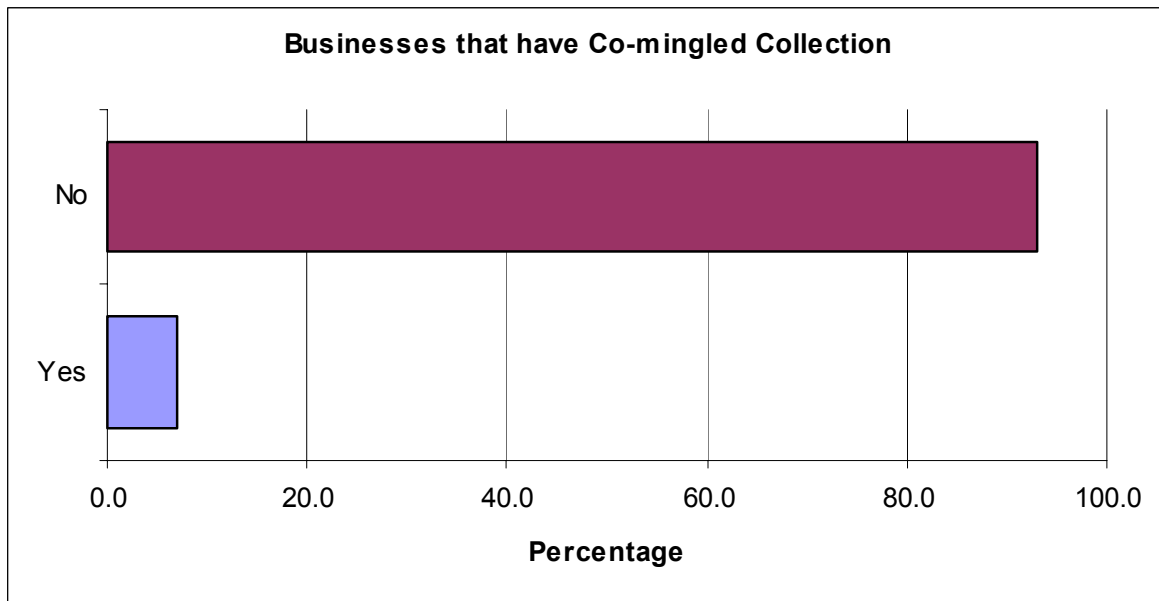


15. What goes in these recycling bins?

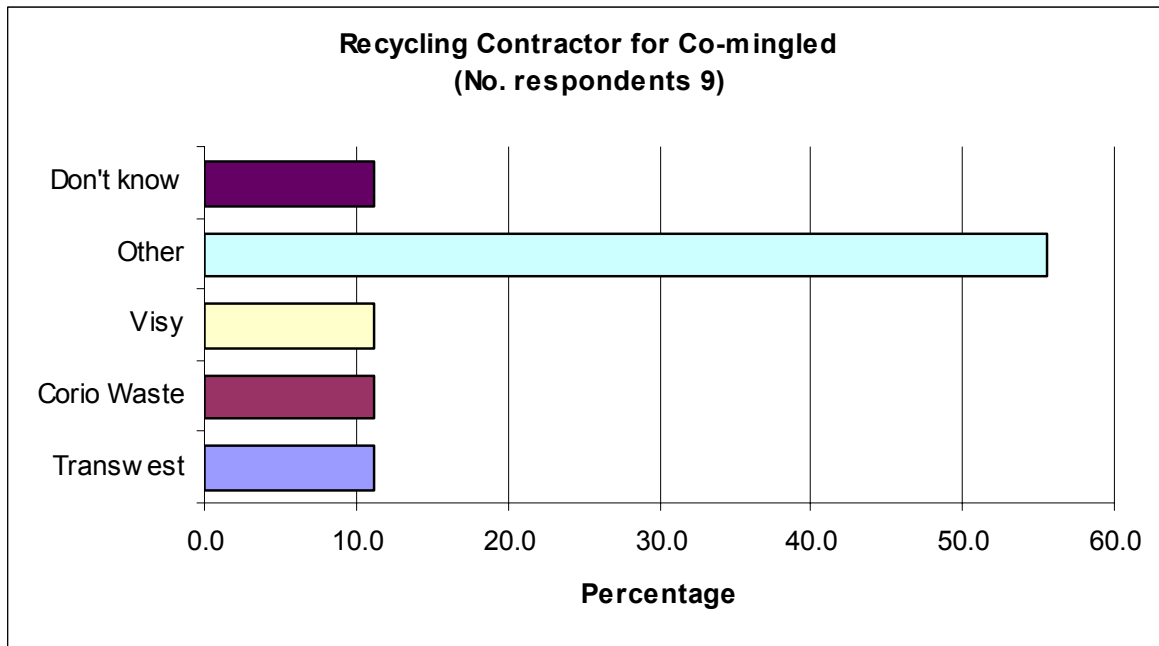


Note: Other includes oil drums and glass

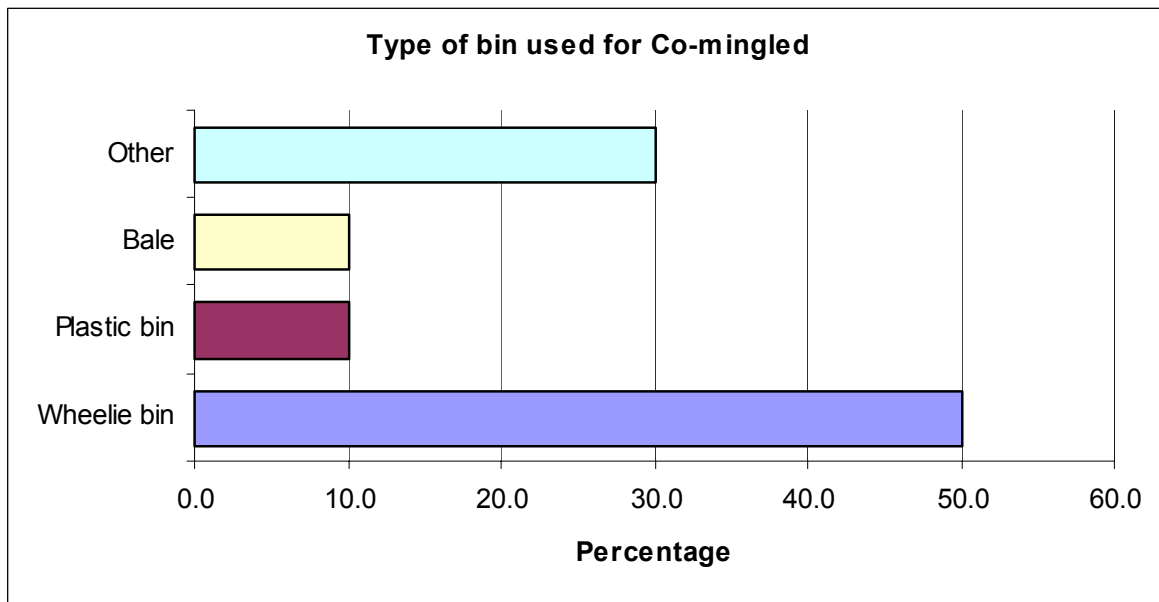
16. Does your business have a co-mingled (for recyclables) wheelie bin collection?



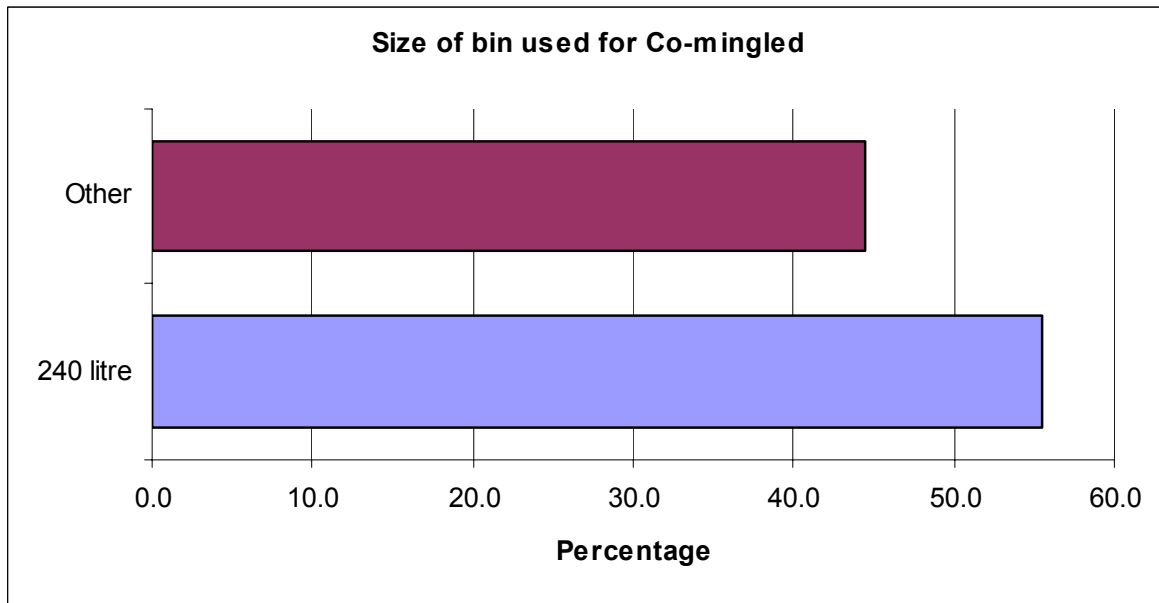
17. Who do you use as your recycling contractor for co-mingled?



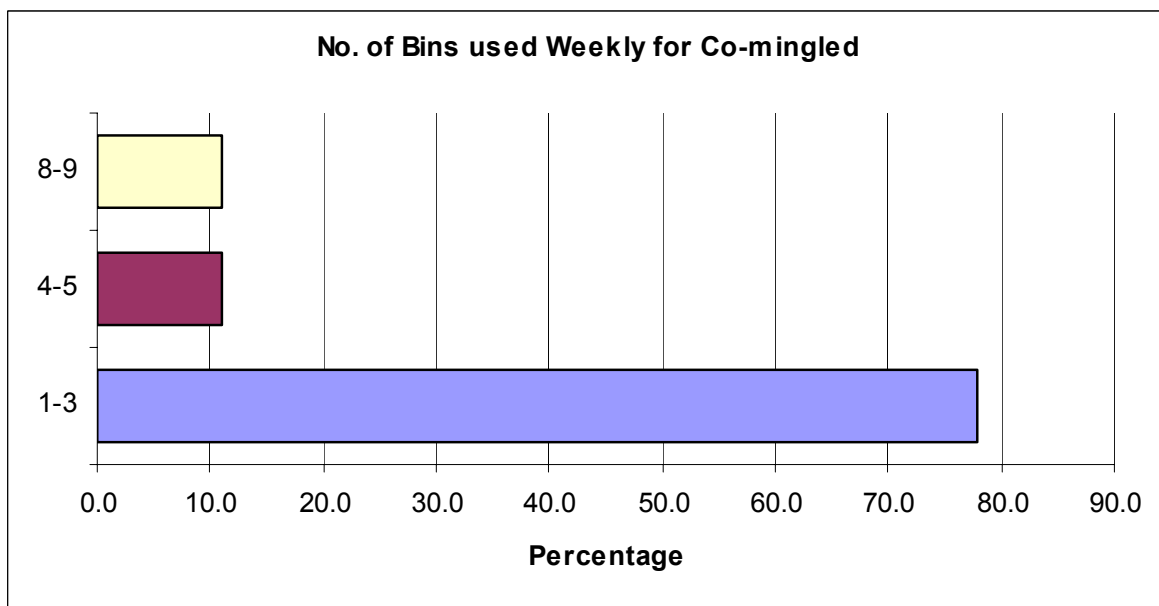
18. What type of bin do you use for co-mingled?



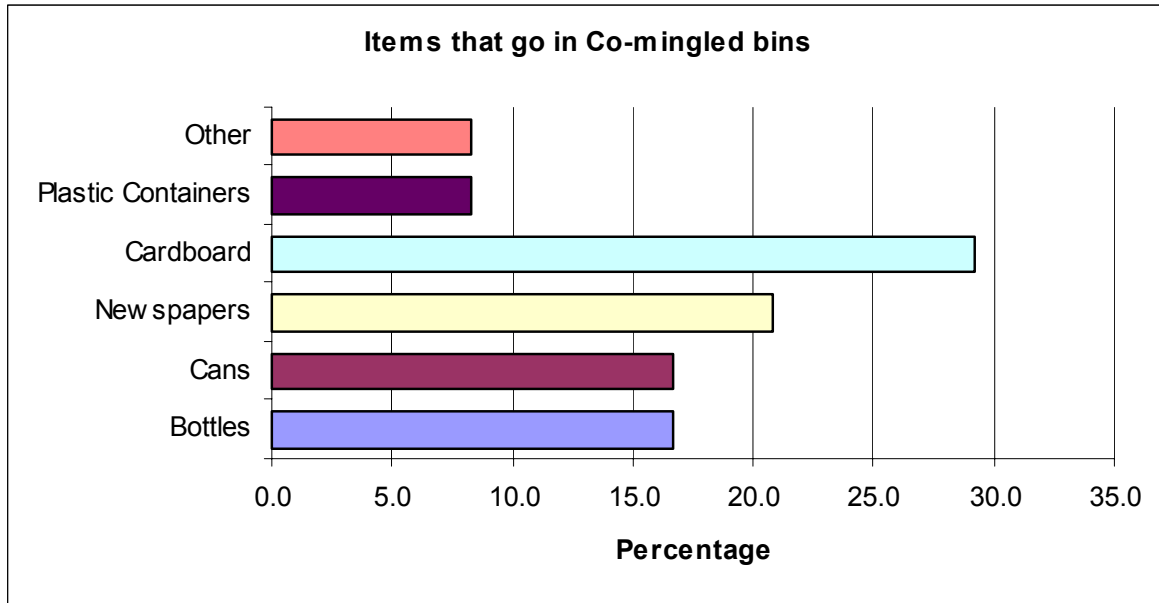
19. What size bin do you use for co-mingled?



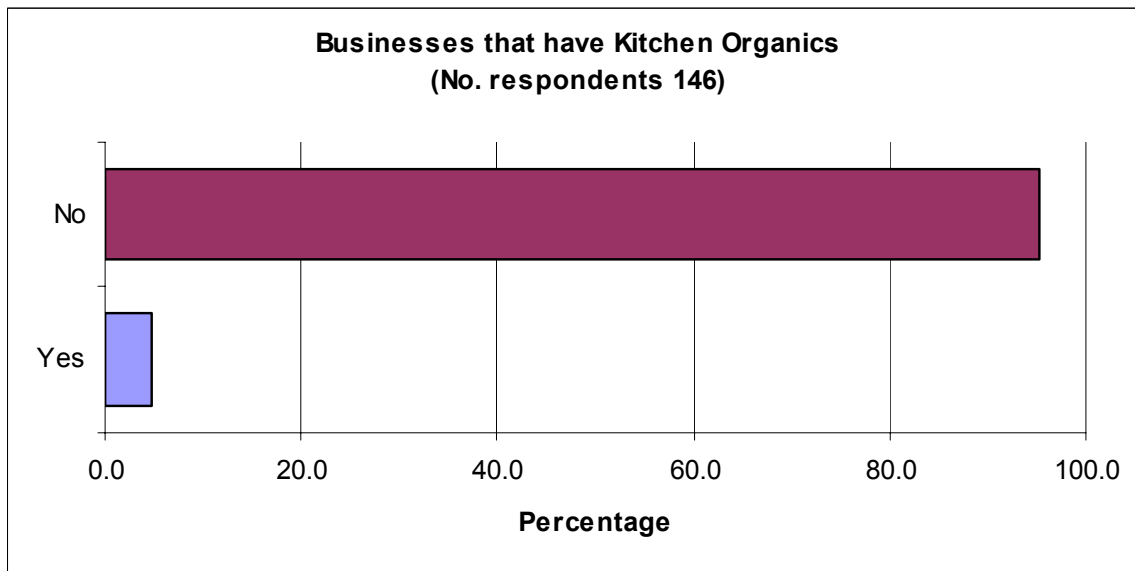
20. How many bins are used weekly for co-mingled?



21. What goes in the co-mingled bins?



22. Does your business have kitchen organics collection?



23. Who is your recycling contractor for kitchen organics?

There were 7 respondents for using kitchen organics, 1 uses Local Waste and 2 chose other as the recycling contractor. The other 4 respondents did not list who the recycling contractor is.

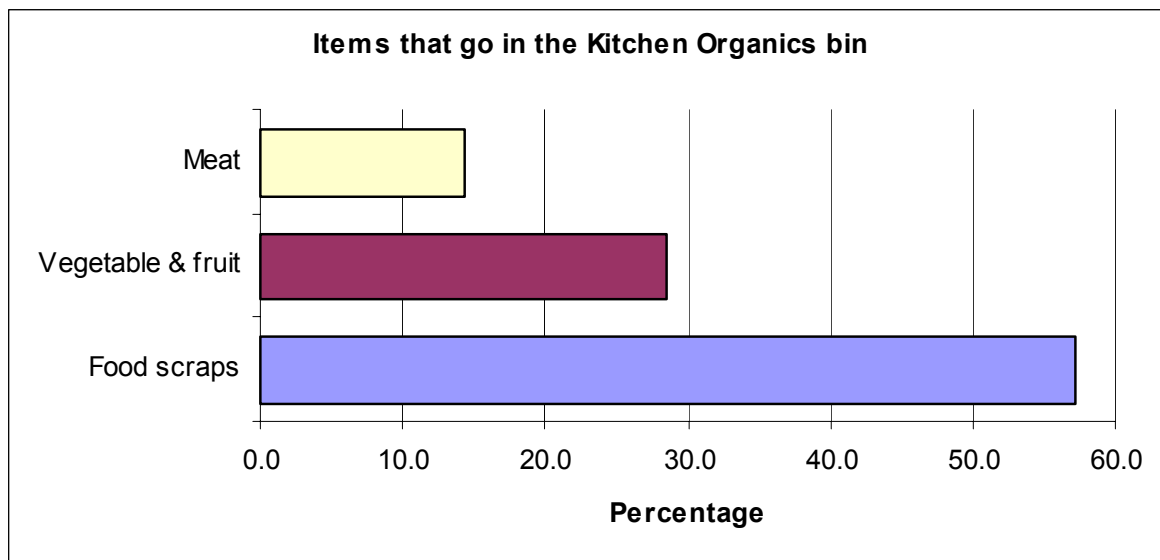
24. What size bin do you use for kitchen organics?

Out of the 7 respondents who use kitchen organics only 2 respondents said they use 120 litre bins. No further details were listed.

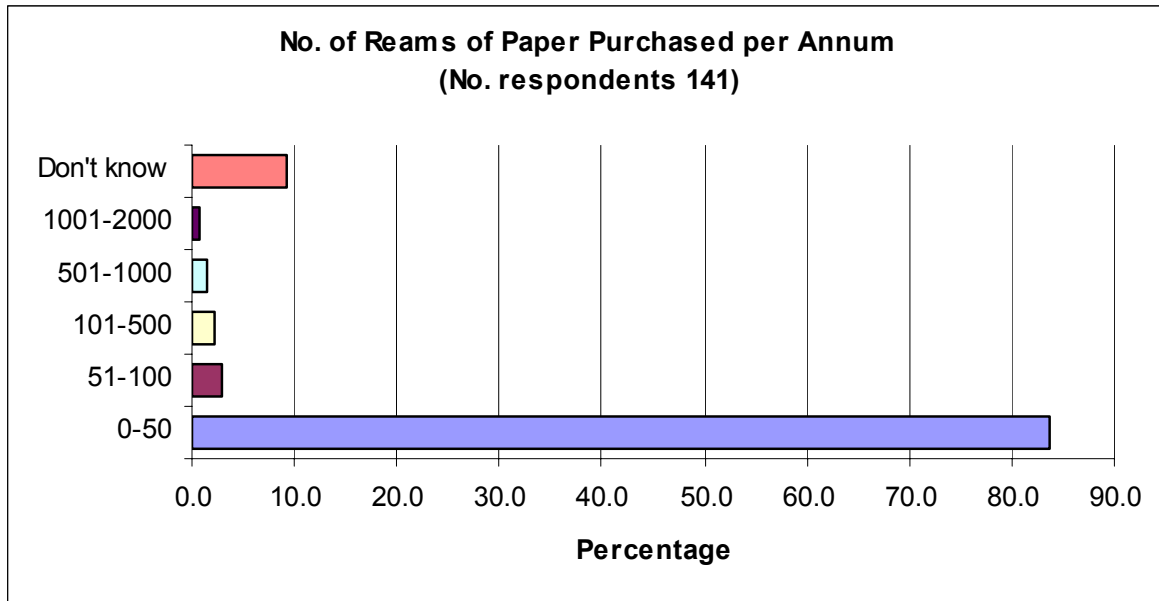
25. How many bins are used weekly for kitchen organics?

2 respondents use 1-3 kitchen organic bins weekly.

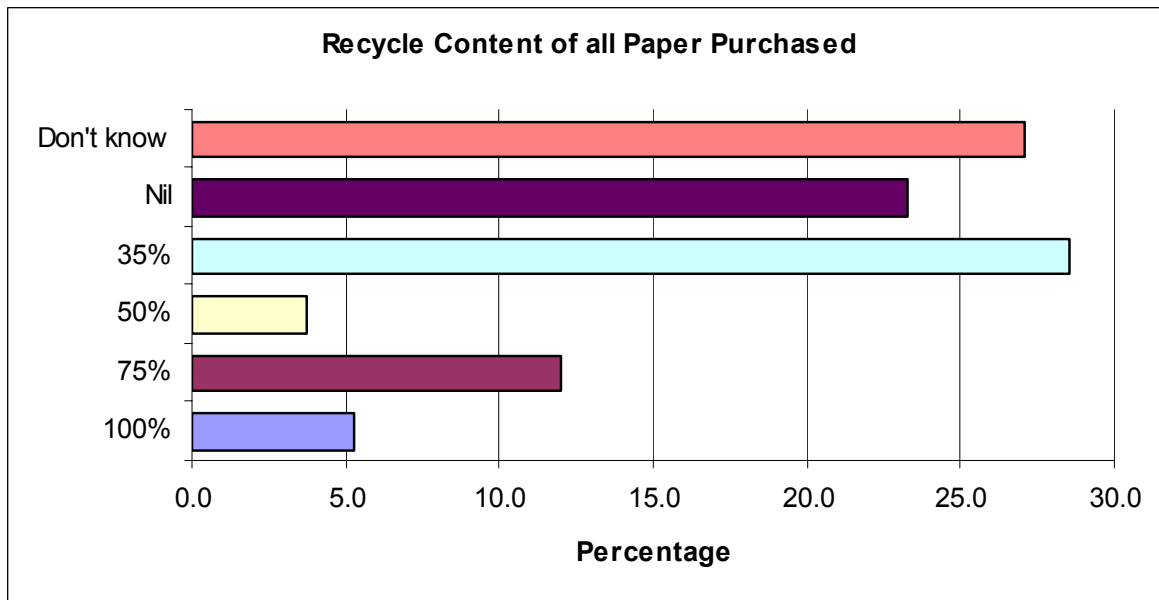
26. What goes in the kitchen organics bins?



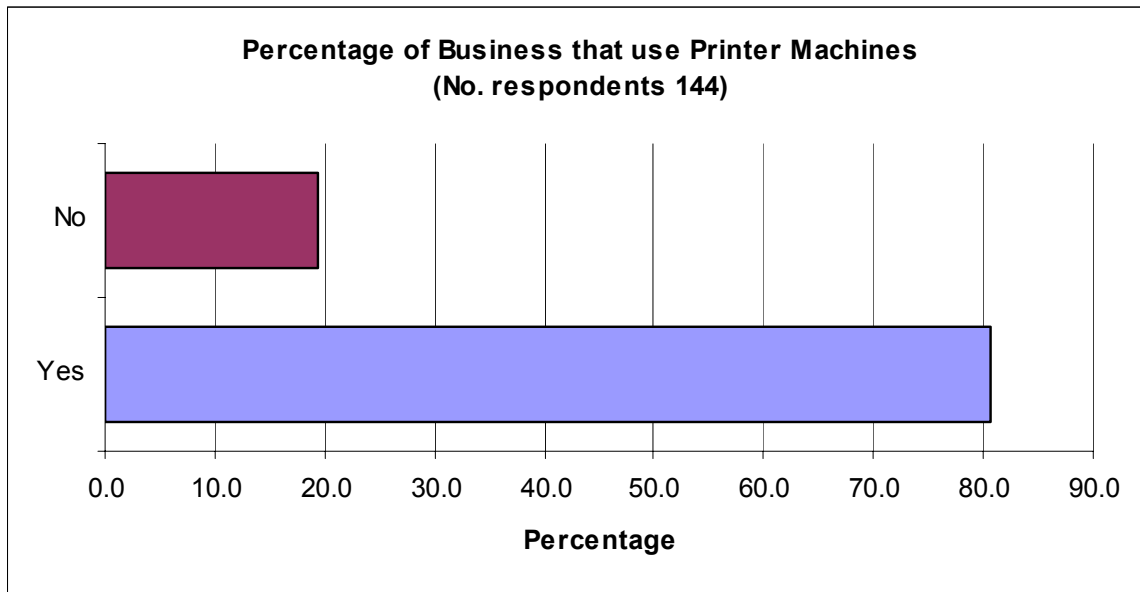
27. Approximately how many reams of paper does the organization purchase per annum?



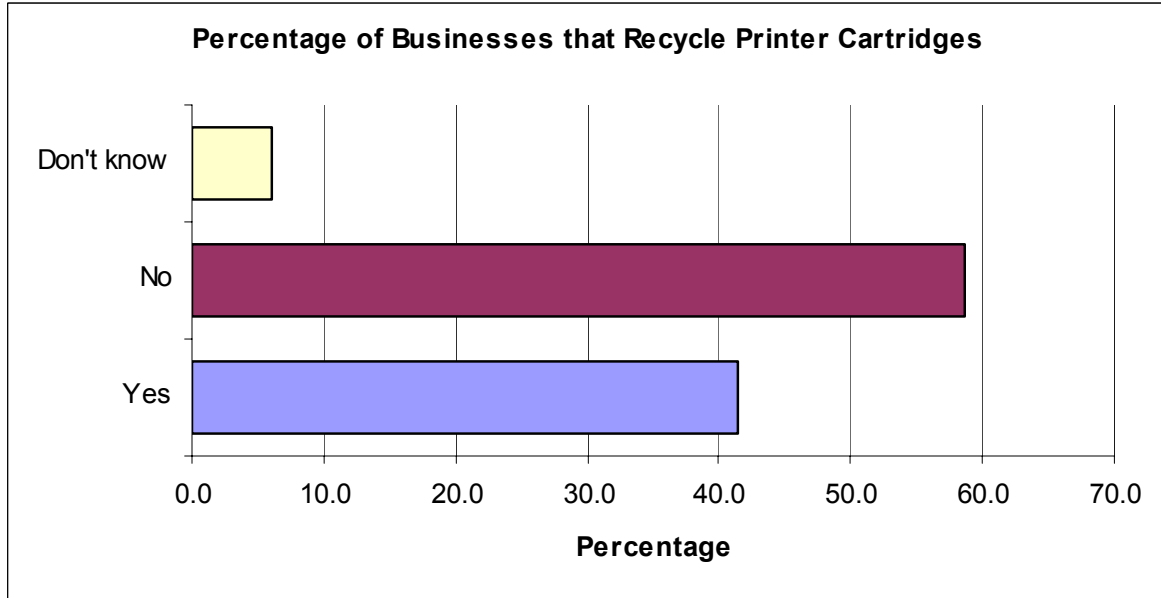
28. What is the recycle content of all paper purchased?



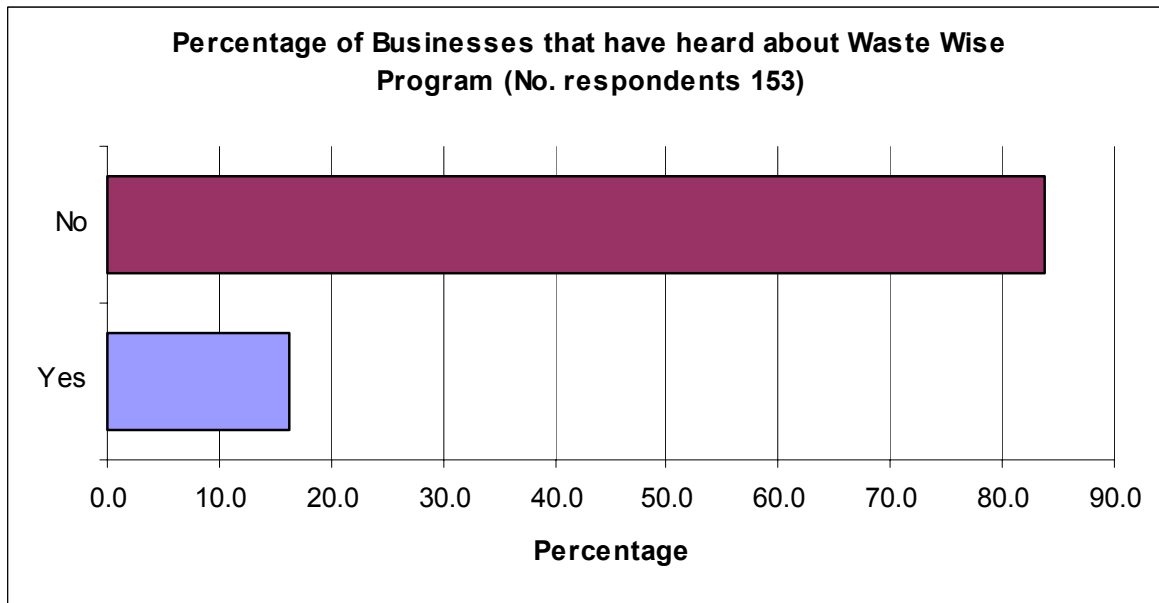
29. Does your business use printer machines?



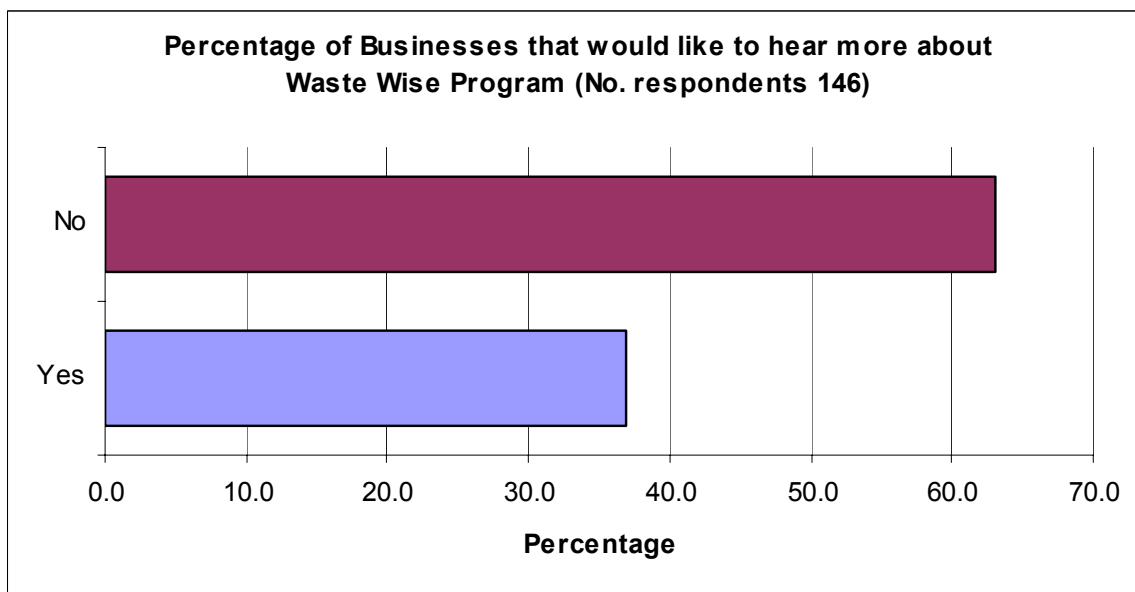
30. Do you recycle printer cartridges?



31. Have you heard about the Waste Wise program?



32. Would you like to hear more about Waste Wise Program?



Breakdown of types of businesses surveyed and actual businesses on the Central Geelong tenancy database

